

Wider Horizons Village



Our village is a particularly powerful model for addressing the risks of aging — especially social isolation

The Idea of a Village is Old — And New

In villages, historically

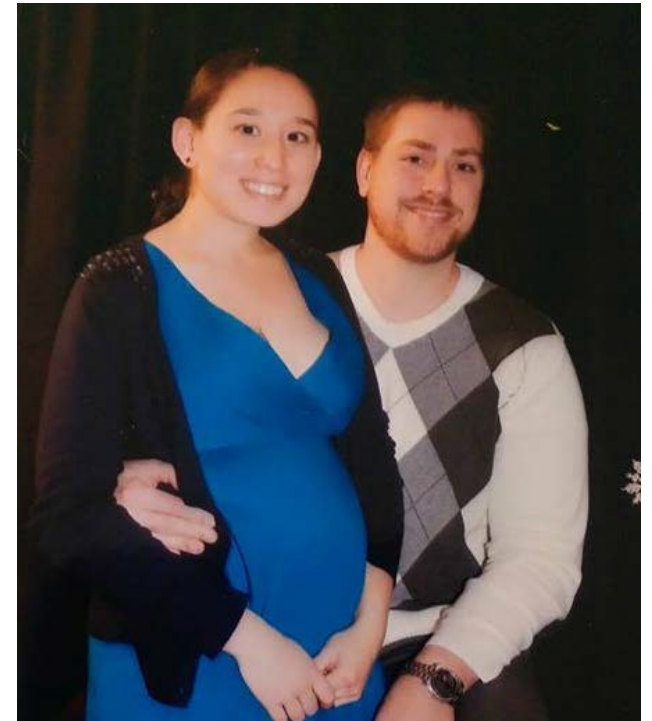
- People live near each other
- Develop pleasant acquaintances
- Provide mutual support
- And over time, some develop deep friendships



Connection, Engagement, Assistance — all are Intertwined in Wider Horizons Village

Three major purposes:

- We bring people together (connection)
- We support their engagement with others in a variety of ways
- We offer assistance
 - by members and other volunteers
 - and a small paid professional staff



Ways to Connect

- Help others within and outside the Village
- Get support from members and other volunteers
- Participate in many different kinds of events and groups
- Do whatever you want with other members



If you can imagine it, it can happen!

Seattle Villages Membership

Village	Village Age	# of Members
Eastside Neighbors Network	1.5 years	20/10*
NEST	8.5 years	115/65*
Northwest Neighbors Network	1.5 years	25/10*
PNA Village	8 years	93/97*
Wider Horizons	5 years	87
Westside Neighbors Network	2 years	12

*lower cost (usually social memberships without volunteer-provided services)

Wider Horizons Members

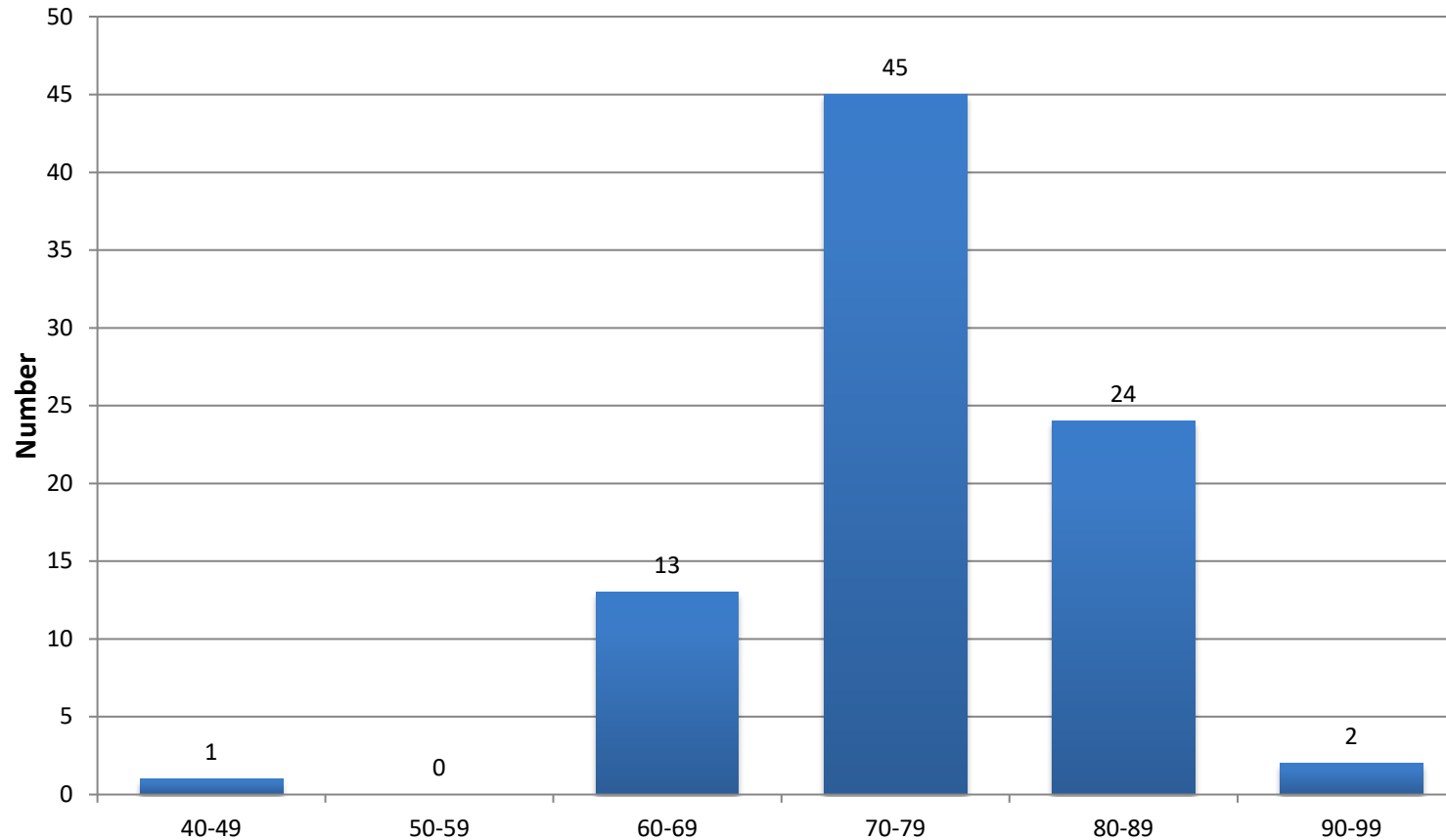
- 85 people who live in Central Seattle
- Two out-of-area members (Vashon and South Seattle)
- Age late 40's to early 90's
- Not very diverse
- Many joined as an extension of a lifetime of citizen activism and want to continue being active...giving back to each other and others in the community
- In the first year, quite a few people left because their expectations were not met; now almost no one does

Members and Membership

- Since we began 5 years ago, the average age of our members has gone up by only 2 years
- About half live alone and half with others
- Full dues for one person are \$600; for a household, \$900
- 27% pay less than the full dues
- Member clusters occur in several parts of our village which creates an even more village-y feeling



Members Ages (average age is 75)



We are “Member-Driven”

- Members elect the Board, choosing from among active members nominated by members
- Members initiate and carry out activities (with support from staff)
- Board members serve as liaisons with all our groups and advise them



How We Do Services

- We address any need (no exclusions/no limits)
- Even if you're not sure *what* you need
- We offer whatever makes the most sense:
 - problem definition
 - problem solving
 - information
 - services from village members/other volunteers
 - referrals to free and paid community resources
- No one **correct** way to request a service (“no wrong door” or “all roads lead to Rome”)
- We respond quickly and without red tape



Income & Expense by Year

Year	Income	Expense	Net	Horizon House contribution
2015	\$ 141,000	\$ 111,800	\$ 29,200	\$ 50,000
2016	\$ 110,000	\$ 122,000	\$ 12,000	\$ 50,000
2017	\$ 90,000	\$ 71,200	\$ 18,800	\$ 25,000
2018	\$ 77,800	\$ 77,800	\$ -	\$ 10,000
2019	\$ 70,300	\$ 82,500	\$ 12,200	\$ 5,000
2020*	\$ 88,600	\$ 76,000	\$ 12,600	\$ -
*conservative projection based on YTD thru May				

Where Our Revenue Comes From

	Dues		Donations		Other		TOTAL
2019	\$36,800	52%	\$27,000	38%	\$6,500	9%	\$70,300
2020	\$38,600	44%	\$38,500	44%	\$11,500	13%	\$88,600

We **Are** Currently Sustainable

- ❖ We have \$42,000 in the bank which would fund our present level of expense through the end of year.
- ❖ We need a surplus to fund cash flow for next year and we project, with reasonable certainty, that we will have the necessary surplus.

What Member Growth Contributes to Sustainability

- ❖ Each new member brings in an additional \$450*
- ❖ If we were at 100 members, we would, therefore have an additional \$6,300
- ❖ If we had 125 members, an additional \$17,750

*Total member revenue divided by # of members